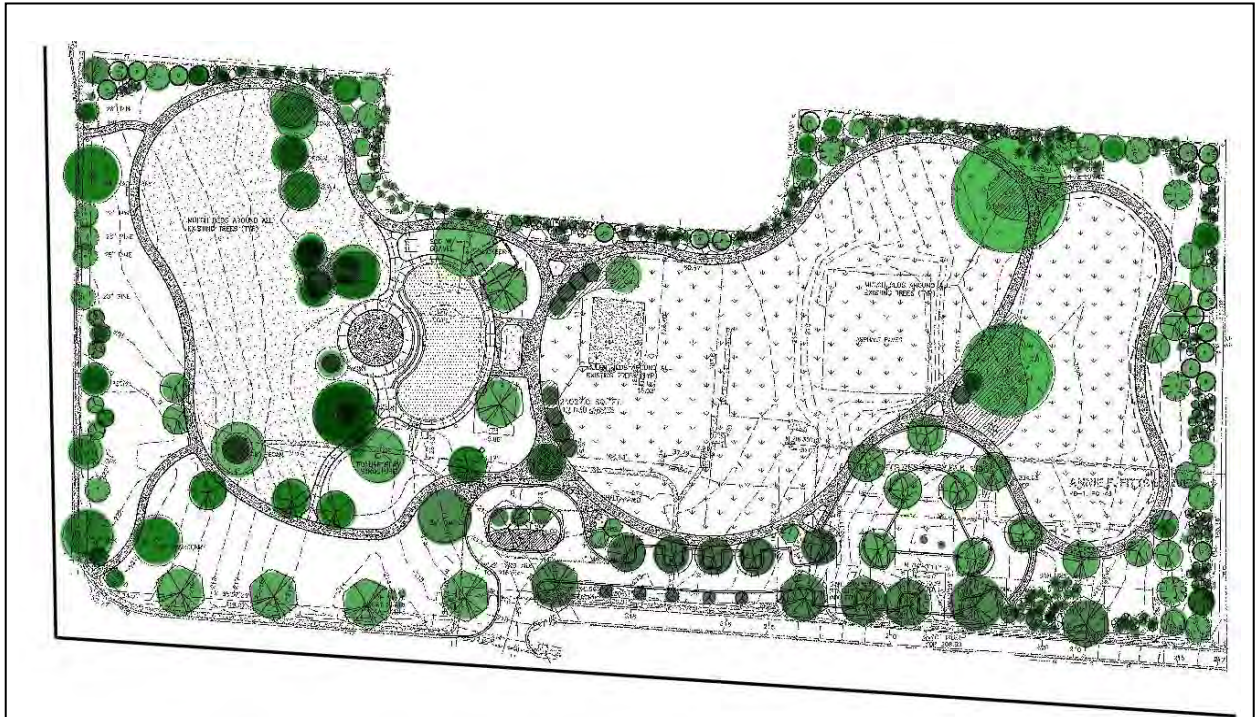




Andrew C. Jackson II

Annette Shelby Park

The site of the former Stafford School on 15th Street has been cleared to a community park. The park will become a buffer between the historical district and 15th Street. Plans include walking trails, an open fountain and nature areas. All existing trees above 6" diameter were retained and designed into the new park.



Owner:
Architect:
Contracting Method:

City of Tuscaloosa
Almon Associates
Traditional Bid

