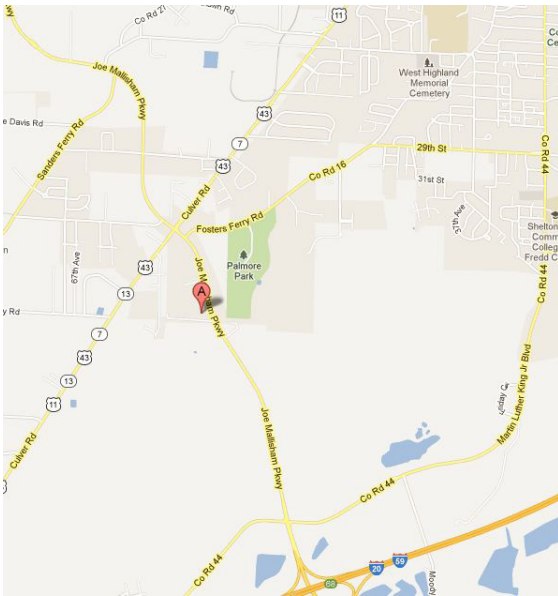


Directions to WAR Construction, Inc.



From Downtown Tuscaloosa

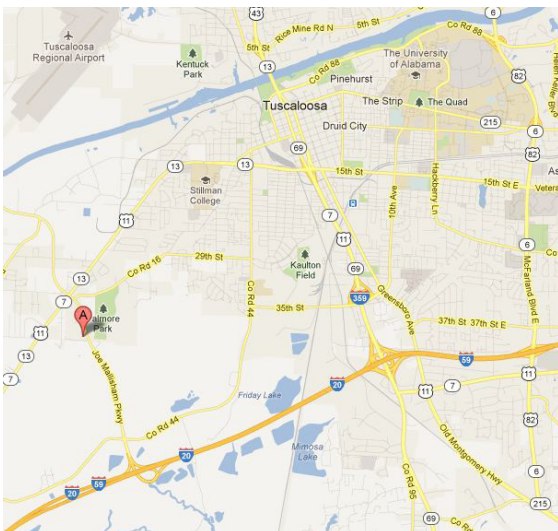
Go west on 15th street until it becomes Culver Road, continue past Stillman College, Friday Lumber and Uniroyal Goodrich until you intersect with Joe Mallisham Parkway. Turn left (south) onto the Parkway, continue 1/2 mile south to WAR Office, which is on the right facing the Parkway at Grover Burchfield Drive.

From Northport, AL

Cross the Black Warrior River on Lurleen Wallace South, continue to 15th street, turn right, follow directions above.

From Birmingham, AL

Take I-59/20 South/West to the Exit #68 Western Bypass (last Tuscaloosa exit) exit to your right onto Joe Mallisham Parkway, continue 1.7 miles north to WAR Office, which is on the left, facing the Parkway at Grover Burchfield Drive.

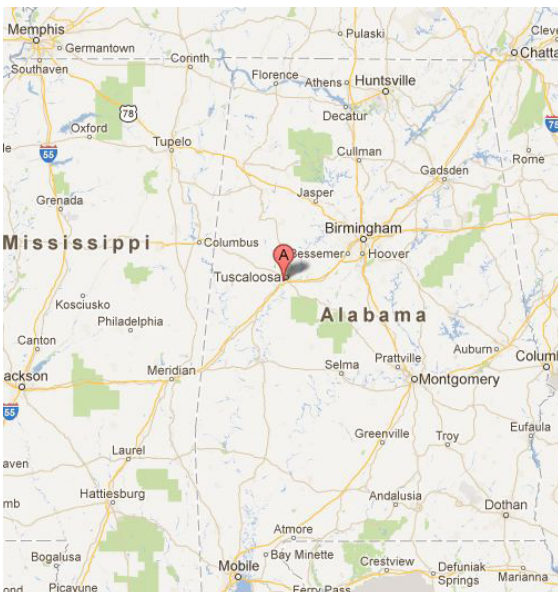


From Montgomery, AL

Take Highway 82 North/West until it intersects with I-59/20. Go west (Meridian, MS) on 1-59/20 for about 4.3 miles take (Exit #68 Western Bypass) exit to your right onto Joe Mallisham Parkway, continue 1.7 miles north to WAR Office, which is on the left, facing the Parkway at Grover Burchfield Drive.

From Columbus, MS

Take Highway 82 East, turn right onto Western Bypass in Northport continue past the airport, Industrial Park and go over the toll bridge (75 cents) continue on the Parkway 2 miles to WAR office, which is on the right at Grover Burchfield Drive (before you reach the interstate).



From Meridian, MS

Take I-59/20 North/East to the Exit #68 Western Bypass (first Tuscaloosa exit), exit to your right onto Joe Mallisham Parkway, continue 1.7 miles north to WAR Office, which is on the left, facing the parkway at Grover Burchfield Drive.

